

# Tectonics Standard Fabrics

# The Perfect Fabric Fit

---

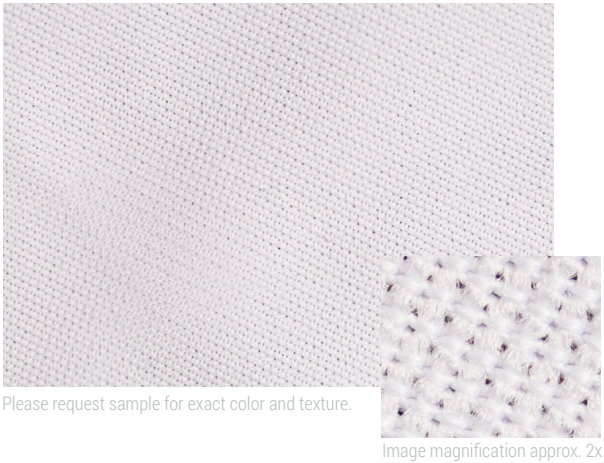
At Tectonics, we believe that our success is contingent on yours. That's why we use only the highest quality materials in every one of our projects. We're constantly looking for fabrics that have innovative features and superior performance characteristics. To ensure they meet this standard, we employ an extensive sourcing process including both foreign and domestic mills, as well as a rigorous validation process that includes:

- 1) Print Quality: All fabrics are tested for crisp, clear prints with precise color matching.
- 2) Fabric Properties: The opacity, stretch, shrink, cleanability, and durability of each fabric is verified.
- 3) Construction Methods: Fabrics go through sewing, cutting, and all finishing methods to test performance.
- 4) Complete System Test: Fabrics are inserted into complete Snap Tube, Extrusion, and when appropriate Lighting Systems to guarantee maximum compatibility.
- 5) Packaging: We roll, fold, and store fabrics to evaluate for creases and determine optimum packaging procedures.
- 6) Flame Retardant: Every Tectonics fabric passes NFPA 701 or better.

With Tectonics fabrics, you enjoy the highest quality materials at competitive prices. Plus, every fabric purchase includes a cleaning kit to keep your fabrics spotless.

Tectonics Fabric Name	Pillowcase 2D	Fully Enclosed 3D	SEG	Pole Pocket	Ceilings	Outdoor	Width	Printable	Opacity
SoftTec *	✓	✓	✓	✓			10'	✓	Limited
SoftTec Black	✓	✓	✓	✓			10'		Moderate
SoftTec Heavy *	✓		✓	✓			10'	✓	Moderate
SoftTec Max	✓	✓	✓	✓			16'	✓	Limited
SoftTec Opaque *			✓	✓			10'	✓	Opaque
StretchTec *	✓	✓	✓				10'	✓	Limited
StretchTec Black	✓	✓	✓				10'		Moderate
LumiTec *		✓	✓		✓		10'	✓	Lightbox
LumiTec UV *			✓	✓			16'	✓	Lightbox
LumiTec Max			✓			✓	16'	✓	Moderate
FlagTec *			✓	✓	✓	✓	10'	✓	Semi-Sheer
FlagTec Max			✓	✓	✓	✓	16'	✓	Semi-Sheer
MeshTec *	✓	✓	✓	✓	✓		10'	✓	Sheer
MeshTec Open	✓	✓	✓		✓		10'	✓	Sheer
Melting Point Black					✓		10'		Limited
Melting Point White					✓		10'		Limited
UltraTec Liner	✓	✓	✓	✓			10'		Opaque
UltraTec SF Liner			✓	✓	✓	✓	10'		Opaque

Tectonics Fabric Name	Pillowcase 2D	Fully Enclosed 3D	SEG	Pole Pocket	Ceilings	Outdoor	Width	Printable	Opacity
ColorTec Arctic	✓	✓	✓	✓			5' - 6"		Limited
ColorTec Grey	✓	✓	✓	✓			5' - 6"		Moderate
ColorTec Charcoal	✓	✓	✓	✓			5' - 6"		Moderate
ColorTec Red	✓	✓	✓	✓			5' - 6"		Moderate
ColorTec Bordeaux	✓	✓	✓	✓			5' - 6"		Moderate
ColorTec Cognac	✓	✓	✓	✓			5' - 6"		Moderate
ColorTec Green	✓	✓	✓	✓			5' - 6"		Moderate
ColorTec Alpine	✓	✓	✓	✓			5' - 6"		Limited
ColorTec Blue	✓	✓	✓	✓			5' - 6"		Moderate
ColorTec Royal	✓	✓	✓	✓			5' - 6"		Moderate
ColorTec Navy	✓	✓	✓	✓			5' - 6"		Moderate
ColorTec Purple	✓	✓	✓	✓			5' - 6"		Moderate



# SoftTec

125" Wide optic white 100% polyester knit fabric for dye sublimation printed graphics.



Tradeshows,  
Displays  
& Exhibits



Architectural  
/ Agency



Advertising



Creative  
/ Design  
Firms



Experiential  
Marketing



Events



Corporate  
Office



Sports /  
Entertainment



Healthcare



Retail



Financial



Museums

## Uses

2D Pillowcase	✓
Fully Enclosed 3D	✓
SEG	✓
Pole Pocket	✓
Ceilings	
Outdoor	
Opacity	Limited

## Features & Specs

10ft Usable Width	NFPA 701 Fire Retardant	 Foldable for Shipping	 Stretch
<div><div>✓ Dye Sub</div><div>● Latex</div><div>● UV</div></div> Printing	5.1 Oz/yd <sup>2</sup>  Fabric Weight	100% Polyester  Fabric Composition	<div><div>✓ Machine Wash</div><div>✓ Dry Sponge</div><div>✓ Spot Cleaner</div></div> Cleanability

Issued to: **Tectonics**

Test Report #: **3-19607-0-**

Completed: **06/12/2017**

Key Test: **NFPA 701-2015 TM#1**

NFPA 701 - Standard Methods of Fire Tests for Flame Propagation of Textiles and Films - 2015 Edition - Test Method #1



Style No: **FRC10101**

Style Name: **SoftTec**

Color: **White**

Width: **125"**

Composition: **100% Polyester**

Weight: **5.1 oz/yd<sup>2</sup>**

End Use: **Exhibit Graphics, Retail Displays, Event Décor**

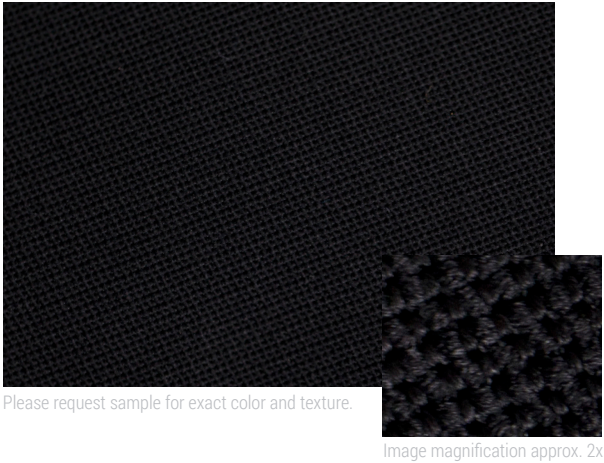
*James Skandalaris*

James Skandalaris  
President

06/12/2017

Date

This fabric meets or exceeds the flammability standards set forth in the National Fire Protection Association specification #NFPA-701. Any alteration of the fabric voids any warranty either implied or expressed. The liability of the seller is limited to the selling price as stated on the invoice and related transportation cost.



# SoftTec Black

122" Wide black 100% polyester knit fabric.



Tradeshows,  
Displays  
& Exhibits



Architectural  
/ Agency



Advertising



Creative  
/ Design  
Firms



Experiential  
Marketing



Events



Corporate  
Office



Sports /  
Entertainment



Healthcare



Retail



Financial



Museums

## Uses

2D Pillowcase	✓
Fully Enclosed 3D	✓
SEG	✓
Pole Pocket	✓
Ceilings	
Outdoor	
Opacity	Moderate

## Features & Specs

10ft Usable Width	NFPA 701 Fire Retardant	 Foldable for Shipping	 Stretch
<div><div></div> Dye Sub</div> <div><div></div> Latex</div> <div><div></div> UV</div> Printing	6 Oz/yd <sup>2</sup>  Fabric Weight	100% Polyester  Fabric Composition	<div><div>✓</div> Machine Wash</div> <div><div>✓</div> Dry Sponge</div> <div><div>✓</div> Spot Cleaner</div> Cleanability

Issued to: **Tectonics**

Test Report #: **3-19608-0-**

Completed: **06/08/2017**

Key Test: **NFPA 701-2015 TM#1**

NFPA 701 - Standard Methods of Fire Tests for Flame Propagation of Textiles and Films - 2015 Edition - Test Method #1



Style No: **FRC10102**

Style Name: **SoftTec**

Color: **Black**

Width: **122"**

Composition: **100% Polyester**

Weight: **6.0 oz/yd<sup>2</sup>**

End Use: **Exhibit Graphics, Retail Displays, Event Décor**

*James Skandalaris*

James Skandalaris  
President

06/08/2017

Date

This fabric meets or exceeds the flammability standards set forth in the National Fire Protection Association specification #NFPA-701. Any alteration of the fabric voids any warranty either implied or expressed. The liability of the seller is limited to the selling price as stated on the invoice and related transportation cost.



# SoftTec Heavy

122" Wide optic white 100% polyester knit fabric for dye sublimation printed graphics.



Tradeshows,  
Displays  
& Exhibits



Architectural  
/ Agency



Advertising



Creative  
/ Design  
Firms



Experiential  
Marketing



Events



Corporate  
Office



Sports /  
Entertainment



Healthcare



Retail



Financial



Museums

## Uses

2D Pillowcase	✓
Fully Enclosed 3D	
SEG	✓
Pole Pocket	✓
Ceilings	
Outdoor	
Opacity	Semi-Sheer

## Features & Specs

<div>10ft</div> <div>Usable Width</div>	<div>NFPA 701</div> <div>Fire Retardant</div>	<div></div> <div>Foldable for Shipping</div>	<div></div> <div>Stretch</div>
<div><div>✓ Dye Sub</div><div>● Latex</div><div>● UV</div></div> <div>Printing</div>	<div>7.5</div> <div>Oz/yd<sup>2</sup></div> <div>Fabric Weight</div>	<div>100%</div> <div>Polyester</div> <div>Fabric Composition</div>	<div><div>✓ Machine Wash</div><div>✓ Dry Sponge</div><div>● Spot Cleaner</div></div> <div>Cleanability</div>

Issued to: **Tectonics**

Test Report #: **3-19609-0-**

Completed: **06/08/2017**

Key Test: **NFPA 701-2015 TM#1**

NFPA 701 - Standard Methods of Fire Tests for Flame Propagation of Textiles and Films - 2015 Edition - Test Method #1



Style No: **FRC10201**

Style Name: **SoftTec Heavy**

Color: **White**

Width: **122"**

Composition: **100% Polyester**

Weight: **7.5 oz/yd<sup>2</sup>**

End Use: **Exhibit Graphics, Retail Displays, Event Décor**

*James Skandalaris*

James Skandalaris  
President

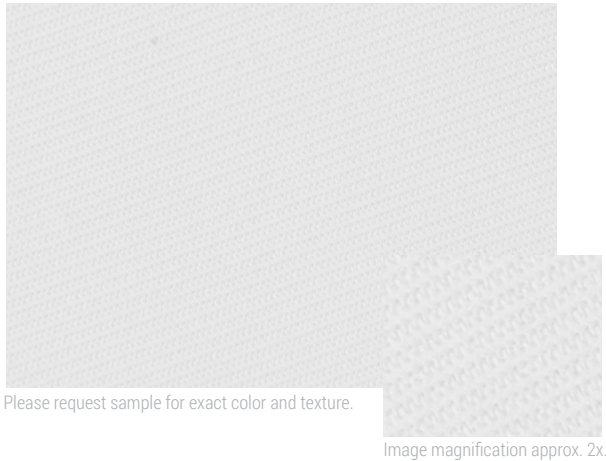
06/08/2017

Date

This fabric meets or exceeds the flammability standards set forth in the National Fire Protection Association specification #NFPA-701. Any alteration of the fabric voids any warranty either implied or expressed. The liability of the seller is limited to the selling price as stated on the invoice and related transportation cost.

# SoftTec Max

192" Wide optic white 100% polyester fabric for dye sublimation printed graphics



Tradeshows,  
Displays  
& Exhibits



Architectural  
/ Agency



Advertising



Creative  
/ Design  
Firms



Experiential  
Marketing



Events



Corporate  
Office



Sports /  
Entertainment



Healthcare



Retail



Financial



Museums

## Uses

2D Pillowcase	✓
Fully Enclosed 3D	✓
SEG	✓
Pole Pocket	✓
Ceilings	
Outdoor	
Opacity	Limited

## Features & Specs

16ft Usable Width	NFPA 701 Fire Retardant	 Foldable for Shipping	 Stretch
<div><div>✓</div> Dye Sub</div> <div><div>●</div> Latex</div> <div><div>●</div> UV</div> Printing	5.3 Oz/yd <sup>2</sup>  Fabric Weight	100% Polyester  Fabric Composition	<div><div>✓</div> Machine Wash</div> <div><div>✓</div> Dry Sponge</div> <div><div>✓</div> Spot Cleaner</div> Cleanability

Issued to: **Tectonics**

Test Report #: **9484**

Completed: **04/24/2018**

Key Test: **NFPA 701-2015 TM#1**

NFPA 701 - Standard Methods of Fire Tests for Flame Propagation of Textiles and Films - 2015 Edition - Test Method #1



Style No: **01**

Style Name: **SoftTec Max**

Color: **White**

Width: **192"**

Composition: **100% Polyester**

Weight: **5.3 oz/yd<sup>2</sup>**

End Use: **Exhibit Graphics, Retail Displays, Event Décor**

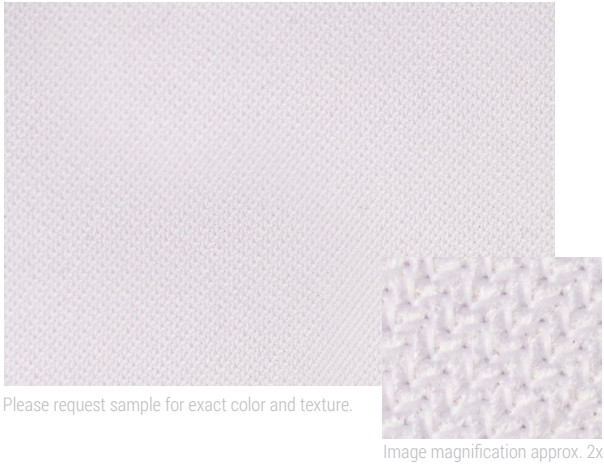
*James Skandalaris*

James Skandalaris  
President

04/24/2018

Date

This fabric meets or exceeds the flammability standards set forth in the National Fire Protection Association specification #NFPA-701. Any alteration of the fabric voids any warranty either implied or expressed. The liability of the seller is limited to the selling price as stated on the invoice and related transportation cost.



# SoftTec Opaque

126" Wide optic white 100% polyester knit fabric with one-sided blackout coating. Face is uncoated for dye sublimation transfer printed graphics.



Tradeshows,  
Displays  
& Exhibits



Architectural  
/ Agency



Advertising



Creative  
/ Design  
Firms



Experiential  
Marketing



Events



Corporate  
Office



Sports /  
Entertainment



Healthcare



Retail



Financial



Museums

## Uses

2D Pillowcase	
Fully Enclosed 3D	
SEG	✓
Pole Pocket	✓
Ceilings	
Outdoor	
Opacity	Opaque

## Features & Specs

10ft Usable Width	NFPA 701 Fire Retardant	 Foldable for Shipping	 Stretch
<div><div>✓ Dye Sub</div><div>● Latex</div><div>● UV</div></div> Printing	7.6 Oz/yd <sup>2</sup> Fabric Weight	100% Polyester with Acrylic Coated Back Fabric Composition	<div><div>● Machine Wash</div><div>✓ Dry Sponge</div><div>✓ Spot Cleaner</div></div> Cleanability

Issued to: **Tectonics**

Test Report #: **26508**

Completed: **08/07/2017**

Key Test: **NFPA 701-2015 TM#1**

NFPA 701 - Standard Methods of Fire Tests for Flame Propagation of Textiles and Films - 2015 Edition - Test Method #1

✓ **Passes**

Style No: **FRC10612**

Style Name: **SoftTec Opaque (Polyester Fabric ST-216)**

Color: **White**

Width: **126"**

Composition: **100% Polyester w/ Acrylic Coated Back**

Weight: **7.6 oz/yd<sup>2</sup>**

End Use: **Exhibit Graphics, Retail Displays, Event Décor**

*James Skandalaris*

James Skandalaris  
President

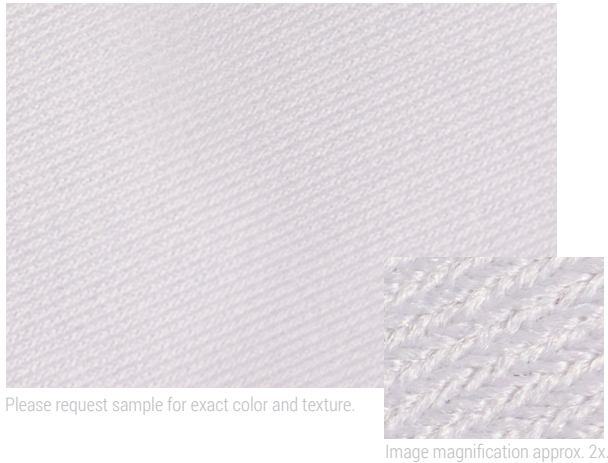
08/07/2017

Date

This fabric meets or exceeds the flammability standards set forth in the National Fire Protection Association specification #NFPA-701. Any alteration of the fabric voids any warranty either implied or expressed. The liability of the seller is limited to the selling price as stated on the invoice and related transportation cost.

# StretchTec

122" Wide optic white 94% polyester, 6% spandex knit fabric for dye sublimation printed graphics.



Tradeshows,  
Displays  
& Exhibits



Architectural  
/ Agency



Advertising



Creative  
/ Design  
Firms



Experiential  
Marketing



Events



Corporate  
Office



Sports /  
Entertainment



Healthcare



Retail



Financial



Museums

## Uses

2D Pillowcase	✓
Fully Enclosed 3D	✓
SEG	✓
Pole Pocket	
Ceilings	
Outdoor	
Opacity	Limited

## Features & Specs

10ft

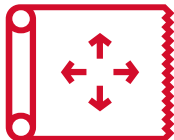
Usable  
Width

NFPA  
701

Fire  
Retardant



Foldable for  
Shipping



Stretch

- ✓

Dye Sub
- Latex
- UV

Printing

8.8

Oz/yd<sup>2</sup>

Fabric Weight

94%

Polyester, 6% Spandex

Fabric Composition

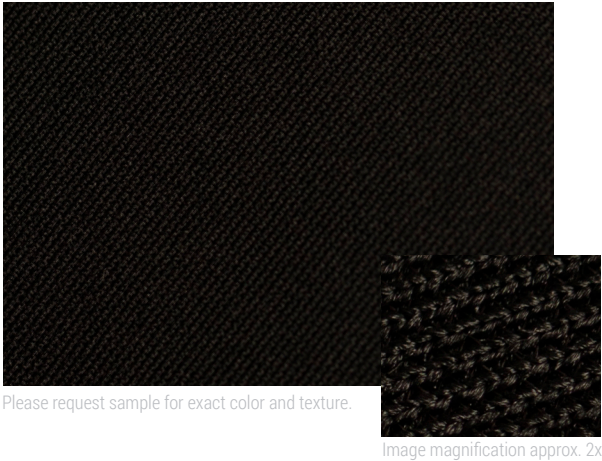
- ✓

Machine Wash
- ✓

Dry Sponge
- ✓

Spot Cleaner

Cleanability



# StretchTec Black

122" Wide black 94% polyester, 6% spandex knit fabric.



Tradeshows,  
Displays  
& Exhibits



Architectural  
/ Agency



Advertising



Creative  
/ Design  
Firms



Experiential  
Marketing



Events



Corporate  
Office



Sports /  
Entertainment



Healthcare



Retail



Financial


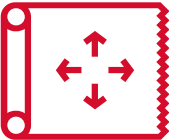


Museums

## Uses

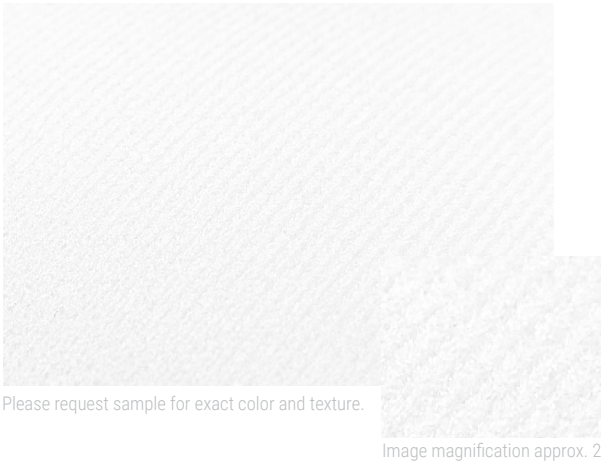
2D Pillowcase	✓
Fully Enclosed 3D	✓
SEG	✓
Pole Pocket	
Ceilings	
Outdoor	
Opacity	Moderate

## Features & Specs

10ft Usable Width	NFPA 701 Fire Retardant	 Foldable for Shipping	 Stretch
<div><div></div> Dye Sub</div> <div><div></div> Latex</div> <div><div></div> UV</div> Printing	8.8 Oz/yd <sup>2</sup>  Fabric Weight	94% Polyester, 6% Spandex  Fabric Composition	<div><div>✓</div> Machine Wash</div> <div><div>✓</div> Dry Sponge</div> <div><div>✓</div> Spot Cleaner</div> Cleanability

# LumiTec

124" knit 100% polyester backlit fabric with vivid color reproduction for dye sublimation printed backlit graphics.



Tradeshows,  
Displays  
& Exhibits



Architectural  
/ Agency



Advertising



Creative  
/ Design  
Firms



Experiential  
Marketing



Events



Corporate  
Office



Sports /  
Entertainment



Healthcare



Retail



Financial



Museums

## Uses

2D Pillowcase	
Fully Enclosed 3D	✓
SEG	✓
Pole Pocket	
Ceilings	✓
Outdoor	
Opacity	Light Box

## Features & Specs

10.3ft	NFPA 701		
Usable Width	Fire Retardant	Foldable for Shipping	Stretch
<div><div>✓ Dye Sub</div><div>● Latex</div><div>● UV</div></div>	7.5 Oz/yd <sup>2</sup>	100% Polyester	<div><div>✓ Machine Wash</div><div>✓ Dry Sponge</div><div>● Spot Cleaner</div></div>
Printing	Fabric Weight	Fabric Composition	Cleanability

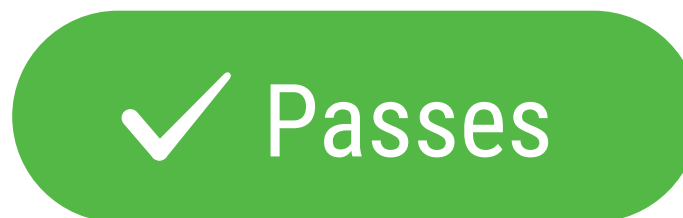
Issued to: **Tectonics**

Test Report #: **060119**

Completed: **6/1/2019**

Key Test: **NFPA 701**

NFPA 701 - Standard Methods of Fire Tests for Flame Propagation of Textiles and Films - 2015 Edition - Test Method #1



Style No: **01**

Style Name: **LumiTec**

Color: **White**

Width: **124"**

Composition: **100% Polyester**

Weight: **7.5 oz/yd<sup>2</sup>**

End Use: **Exhibit Graphics, Retail Displays, Event Decor**

*James Skandalaris*

James Skandalaris  
**President**

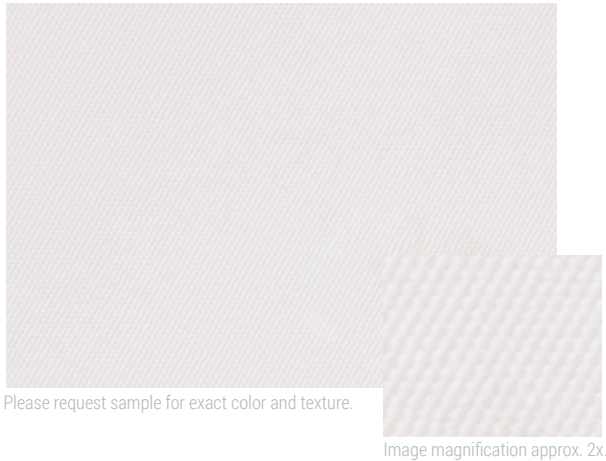
06/01/2019

**Date**

This fabric meets or exceeds the flammability standards set forth in the National Fire Protection Association specification #NFPA-701. Any alteration of the fabric voids any warranty either implied or expressed. The liability of the seller is limited to the selling price as stated on the invoice and related transportation cost.

# LumiTec Max

192" woven 100% polyester backlit fabric with exceptional color vibrancy for dye sub printing on flat surfaces.



Tradeshows,  
Displays  
& Exhibits



Architectural  
/ Agency



Advertising



Creative  
/ Design  
Firms



Experiential  
Marketing



Events



Corporate  
Office



Sports /  
Entertainment



Healthcare



Retail



Financial


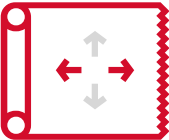


Museums

## Uses

2D Pillowcase	
Fully Enclosed 3D	
SEG	✓
Pole Pocket	
Ceilings	
Outdoor	✓
Opacity	Moderate

## Features & Specs

16ft Usable Width	NFPA 701 Fire Retardant	 Foldable for Shipping	 Stretch
<div><div>✓ Dye Sub</div><div>● Latex</div><div>● UV</div></div> Printing	7.6 Oz/yd <sup>2</sup>  Fabric Weight	100% Polyester  Fabric Composition	<div><div>✓ Machine Wash</div><div>✓ Dry Sponge</div><div>● Spot Cleaner</div></div> Cleanability

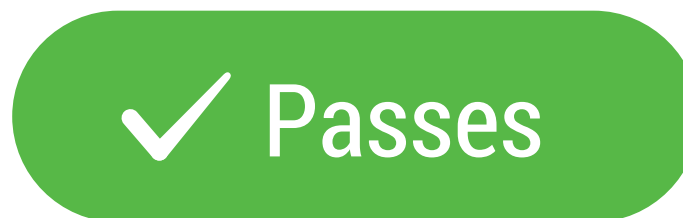
Issued to: **Tectonics**

Test Report #: **21858**

Completed: **04/24/2018**

Key Test: **NFPA 701-2015 TM#1**

NFPA 701 - Standard Methods of Fire Tests for Flame Propagation of Textiles and Films - 2015 Edition - Test Method #1



Style No: **01**

Style Name: **LumiTec Max**

Color: **White**

Width: **192"**

Composition: **100% Polyester**

Weight: **7.6 oz/yd<sup>2</sup>**

End Use: **Exhibit Graphics, Retail Displays, Event Décor**

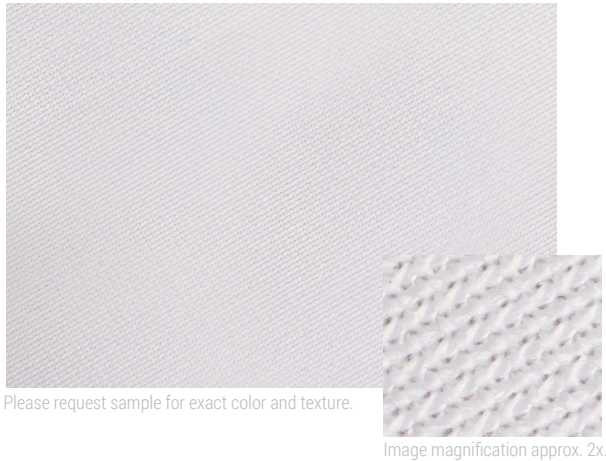
*James Skandalaris*

James Skandalaris  
President

04/24/2018

Date

This fabric meets or exceeds the flammability standards set forth in the National Fire Protection Association specification #NFPA-701. Any alteration of the fabric voids any warranty either implied or expressed. The liability of the seller is limited to the selling price as stated on the invoice and related transportation cost.



# LumiTec UV

198" Wide optic white 100% polyester knit fabric for UV printed backlit graphics.



Tradeshows,  
Displays  
& Exhibits



Architectural  
/ Agency



Advertising



Creative  
/ Design  
Firms



Experiential  
Marketing



Events



Corporate  
Office



Sports /  
Entertainment



Healthcare



Retail



Financial



Museums

## Uses

2D Pillowcase	
Fully Enclosed 3D	
SEG	✓
Pole Pocket	✓
Ceilings	
Outdoor	
Opacity	Lightbox

## Features & Specs

16.33ft	NFPA 701		
Usable Width	Fire Retardant	Foldable for Shipping	Stretch
<div><div></div> Dye Sub</div> <div><div></div> Latex</div> <div><div>✓</div> UV</div>	7.1 Oz/yd <sup>2</sup>	100% Polyester	<div><div>✓</div> Machine Wash</div> <div><div>✓</div> Dry Sponge</div> <div><div></div> Spot Cleaner</div>
Printing	Fabric Weight	Fabric Composition	Cleanability

Issued to: **Tectonics**

Test Report #: **3-19619-0-**

Completed: **06/12/2017**

Key Test: **NFPA 701-2015 TM#1**

NFPA 701 - Standard Methods of Fire Tests for Flame Propagation of Textiles and Films - 2015 Edition - Test Method #1



Style No: **FRC10830**

Style Name: **LumiTec UV**

Color: **White**

Width: **198"**

Composition: **100% Polyester**

Weight: **7.1 oz/yd<sup>2</sup>**

End Use: **Exhibit Graphics, Retail Displays, Event Décor**

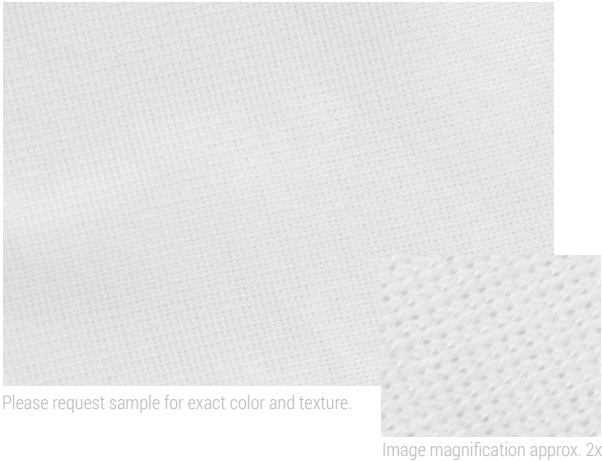
*James Skandalaris*

James Skandalaris  
President

06/12/2017

Date

This fabric meets or exceeds the flammability standards set forth in the National Fire Protection Association specification #NFPA-701. Any alteration of the fabric voids any warranty either implied or expressed. The liability of the seller is limited to the selling price as stated on the invoice and related transportation cost.



# FlagTec

122" Wide optic white 100% polyester mesh fabric for dye sublimation printed graphics.



Tradeshows,  
Displays  
& Exhibits



Architectural  
/ Agency



Advertising



Creative  
/ Design  
Firms



Experiential  
Marketing



Events



Corporate  
Office



Sports /  
Entertainment



Healthcare



Retail



Financial



Museums

## Uses

2D Pillowcase	
Fully Enclosed 3D	
SEG	✓
Pole Pocket	✓
Ceilings	✓
Outdoor	✓
Opacity	Semi Sheer

## Features & Specs

9.83ft Usable Width	NFPA 701 Fire Retardant	 Foldable for Shipping	 Stretch
<div><div>✓ Dye Sub</div><div>● Latex</div><div>● UV</div></div> Printing	3.4 Oz/yd <sup>2</sup> Fabric Weight	100% Polyester Fabric Composition	<div><div>✓ Machine Wash</div><div>✓ Dry Sponge</div><div>● Spot Cleaner</div></div> Cleanability

Issued to: **Tectonics**

Test Report #: **3-19616-0-**

Completed: **06/09/2017**

Key Test: **NFPA 701-2015 TM#1**

NFPA 701 - Standard Methods of Fire Tests for Flame Propagation of Textiles and Films - 2015 Edition - Test Method #1

✓ **Passes**

Style No: **FRC10701**

Style Name: **FlagTec**

Color: **White**

Width: **120"**

Composition: **100% Polyester**

Weight: **3.4 oz/yd<sup>2</sup>**

End Use: **Exhibit Graphics, Retail Displays, Event Décor**

*James Skandalaris*

James Skandalaris  
President

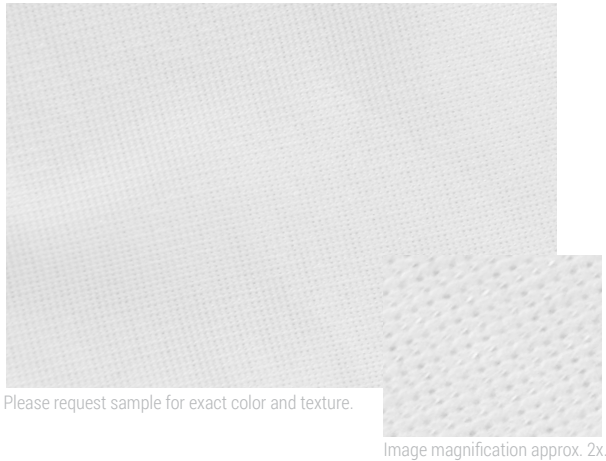
06/09/2017

Date

This fabric meets or exceeds the flammability standards set forth in the National Fire Protection Association specification #NFPA-701. Any alteration of the fabric voids any warranty either implied or expressed. The liability of the seller is limited to the selling price as stated on the invoice and related transportation cost.

# FlagTec Max

192" Wide optic white 100% polyester mesh fabric for dye sublimation printed graphics.



Tradeshow,  
Displays  
& Exhibits



Architectural  
/ Agency



Advertising



Creative  
/ Design  
Firms



Experiential  
Marketing



Events



Corporate  
Office



Sports /  
Entertainment



Healthcare



Retail



Financial



Museums

## Uses

2D Pillowcase	
Fully Enclosed 3D	
SEG	✓
Pole Pocket	✓
Ceilings	✓
Outdoor	✓
Opacity	Semi-Sheer

## Features & Specs

<div>16ft</div> <div>Usable Width</div>	<div>NFPA 701</div> <div>Fire Retardant</div>	<div></div> <div>Foldable for Shipping</div>	<div></div> <div>Stretch</div>
<div><div>✓ Dye Sub</div><div>● Latex</div><div>● UV</div></div> <div>Printing</div>	<div>3.4</div> <div>Oz/yd<sup>2</sup></div> <div>Fabric Weight</div>	<div>100%</div> <div>Polyester</div> <div>Fabric Composition</div>	<div><div>✓ Machine Wash</div><div>✓ Dry Sponge</div><div>● Spot Cleaner</div></div> <div>Cleanability</div>

Issued to: **Tectonics**

Test Report #: **21858**

Completed: **04/24/2018**

Key Test: **NFPA 701-2015 TM#1**

NFPA 701 - Standard Methods of Fire Tests for Flame Propagation of Textiles and Films - 2015 Edition - Test Method #1



Style No: **01**

Style Name: **FlagTec Max**

Color: **White**

Width: **192"**

Composition: **100% Polyester**

Weight: **3.4 oz/yd<sup>2</sup>**

End Use: **Exhibit Graphics, Retail Displays, Event Décor**

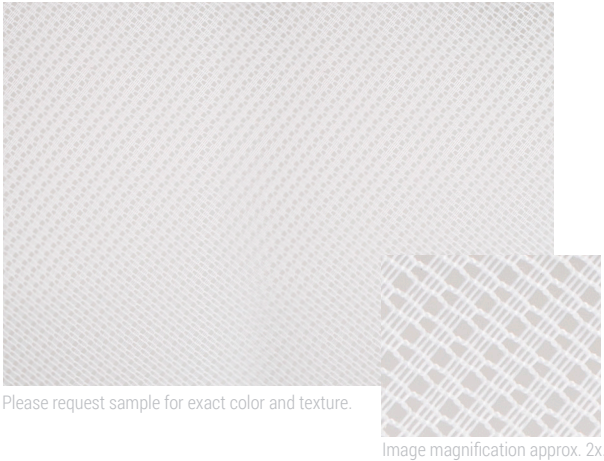
*James Skandalaris*

James Skandalaris  
President

04/24/2018

Date

This fabric meets or exceeds the flammability standards set forth in the National Fire Protection Association specification #NFPA-701. Any alteration of the fabric voids any warranty either implied or expressed. The liability of the seller is limited to the selling price as stated on the invoice and related transportation cost.



# MeshTec

120" Wide optic white 100% polyester tricot knit, 64% open mesh fabric for dye sublimation printed graphics.



Tradeshows,  
Displays  
& Exhibits



Architectural  
/ Agency



Advertising



Creative  
/ Design  
Firms



Experiential  
Marketing



Events



Corporate  
Office



Sports /  
Entertainment



Healthcare



Retail



Financial



Museums

## Uses

2D Pillowcase	✓
Fully Enclosed 3D	✓
SEG	✓
Pole Pocket	✓
Ceilings	✓
Outdoor	
Opacity	Sheer

## Features & Specs

9.83ft	NFPA 701		
Usable Width	Fire Retardant	Foldable for Shipping	Stretch
<div><div>✓ Dye Sub</div><div>● Latex</div><div>● UV</div></div>	3 Oz/yd <sup>2</sup>	100% Polyester	<div><div>● Machine Wash</div><div>✓ Dry Sponge</div><div>● Spot Cleaner</div></div>
Printing	Fabric Weight	Fabric Composition	Cleanability

Issued to: **Tectonics**

Test Report #: **3-19631-0-**

Completed: **06/08/2017**

Key Test: **NFPA 701-2015 TM#1**

NFPA 701 - Standard Methods of Fire Tests for Flame Propagation of Textiles and Films - 2015 Edition - Test Method #1



Style No: **FRC10401**

Style Name: **MeshTec**

Color: **White**

Width: **120"**

Composition: **100% Polyester**

Weight: **3.0 oz/yd<sup>2</sup>**

End Use: **Exhibit Graphics, Retail Displays, Event Décor**

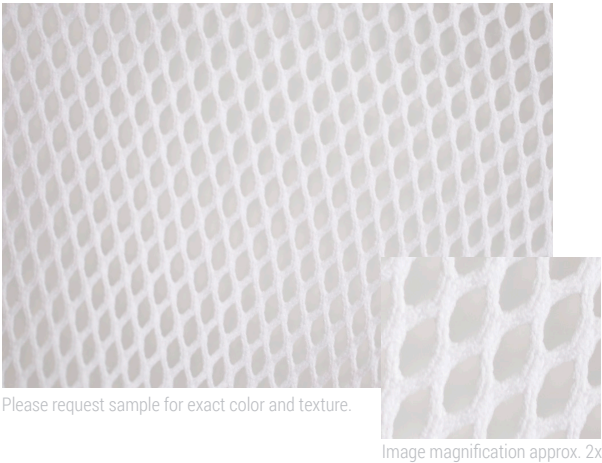
*James Skandalaris*

James Skandalaris  
President

06/08/2017

Date

This fabric meets or exceeds the flammability standards set forth in the National Fire Protection Association specification #NFPA-701. Any alteration of the fabric voids any warranty either implied or expressed. The liability of the seller is limited to the selling price as stated on the invoice and related transportation cost.



# MeshTec Open

120" Wide optic white 100% polyester knit mesh fabric for dye sublimation transfer printed graphics.



Tradeshow,  
Displays  
& Exhibits



Architectural  
/ Agency



Advertising



Creative  
/ Design  
Firms



Experiential  
Marketing



Events



Corporate  
Office



Sports /  
Entertainment



Healthcare



Retail



Financial



Museums

## Uses

2D Pillowcase	✓
Fully Enclosed 3D	✓
SEG	✓
Pole Pocket	
Ceilings	✓
Outdoor	
Opacity	Sheer

## Features & Specs

9.83ft	NFPA 701		
Usable Width	Fire Retardant	Foldable for Shipping	Stretch
✓ Dye Sub ✓ Latex ● UV	3.2 Oz/yd <sup>2</sup>	100% Polyester	✓ Machine Wash ✓ Dry Sponge ● Spot Cleaner
Printing	Fabric Weight	Fabric Composition	Cleanability

Issued to: **Tectonics**

Test Report #: **3-19618-0-**

Completed: **06/09/2017**

Key Test: **NFPA 701-2015 TM#1**

NFPA 701 - Standard Methods of Fire Tests for Flame Propagation of Textiles and Films - 2015 Edition - Test Method #1



Style No: **FRC10826**

Style Name: **MeshTec Open**

Color: **White**

Width: **120"**

Composition: **100% Polyester**

Weight: **3.2 oz/yd<sup>2</sup>**

End Use: **Exhibit Graphics, Retail Displays, Event Décor**

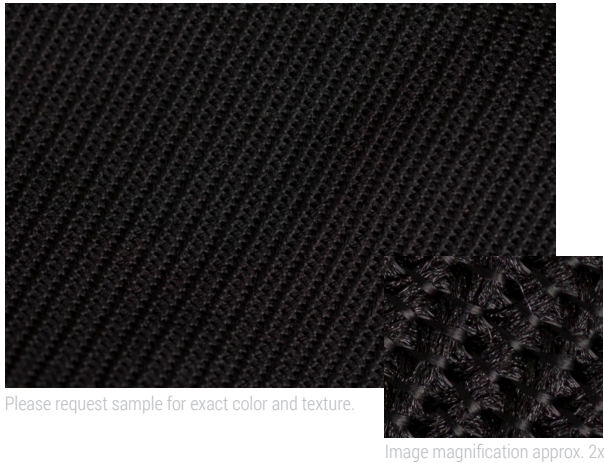
*James Skandalaris*

James Skandalaris  
President

06/09/2017

Date

This fabric meets or exceeds the flammability standards set forth in the National Fire Protection Association specification #NFPA-701. Any alteration of the fabric voids any warranty either implied or expressed. The liability of the seller is limited to the selling price as stated on the invoice and related transportation cost.



Please request sample for exact color and texture.

Image magnification approx. 2x.

# Melting Point Black

102" Wide black 100% Trevira CS knit ceiling fabric with melting lines every 12" that allow heat and smoke to activate sprinkler systems in case of fire.



Tradeshows,  
Displays  
& Exhibits



Architectural  
/ Agency



Advertising



Creative  
/ Design  
Firms



Experiential  
Marketing



Events



Corporate  
Office



Sports /  
Entertainment



Healthcare



Retail



Financial



Museums

## Uses

2D Pillowcase	
Fully Enclosed 3D	
SEG	
Pole Pocket	
Ceilings	✓
Outdoor	
Opacity	Limited

## Features & Specs

10ft Usable Width	NFPA 701 Fire Retardant	 Foldable for Shipping	 Stretch
<div><div></div> Dye Sub</div> <div><div></div> Latex</div> <div><div></div> UV</div> Printing	6.1 Oz/yd <sup>2</sup>  Fabric Weight	100% Trevira CS  Fabric Composition	<div><div>✓</div> Machine Wash</div> <div><div>✓</div> Dry Sponge</div> <div><div></div> Spot Cleaner</div> Cleanability

Issued to: **Tectonics**

Test Report #: **2-98559-0**

Completed: **09/05/2013**

Key Test: **CA 1237 SM**

California Fire Marshal 19 - Section 1237 Fire Resistance; Small Scale Test - Interior Materials Qualification



Style No: **FRC10810**

Style Name: **Melting Point**

Color: **Black**

Width: **102"**

Composition: **100% Trevira CS**

Weight: **6.1 oz/yd²**

End Use: **Ceiling Fabric For Use in Areas with Sprinkler Systems**

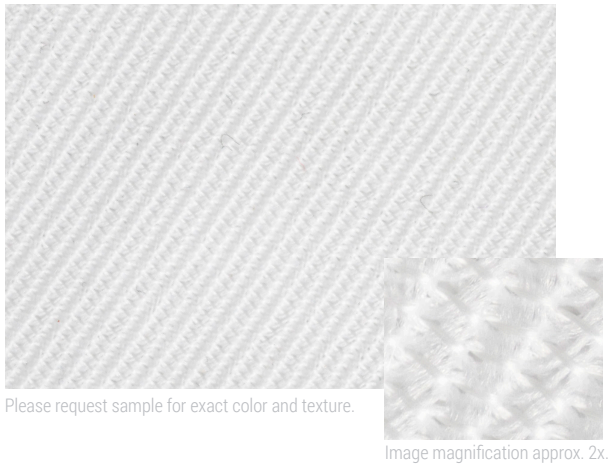
*James Skandalaris*

James Skandalaris  
President

06/09/2017

Date

This fabric meets or exceeds the flammability standards set forth in the National Fire Protection Association specification #NFPA-701. Any alteration of the fabric voids any warranty either implied or expressed. The liability of the seller is limited to the selling price as stated on the invoice and related transportation cost.



# Melting Point White

102" Wide white 100% Trevira CS knit ceiling fabric with melting lines every 12" that allow heat and smoke to activate sprinkler system in case of fire.



Tradeshows,  
Displays  
& Exhibits



Architectural  
/ Agency



Advertising



Creative  
/ Design  
Firms



Experiential  
Marketing



Events



Corporate  
Office



Sports /  
Entertainment



Healthcare



Retail



Financial



Museums

## Uses

2D Pillowcase	
Fully Enclosed 3D	
SEG	
Pole Pocket	
Ceilings	✓
Outdoor	
Opacity	Limited

## Features & Specs

10ft Usable Width	NFPA 701 Fire Retardant	 Foldable for Shipping	 Stretch
<div><div></div> Dye Sub</div> <div><div></div> Latex</div> <div><div></div> UV</div> Printing	6.1 Oz/yd <sup>2</sup>  Fabric Weight	100% Trevira CS  Fabric Composition	<div><div>✓</div> Machine Wash</div> <div><div>✓</div> Dry Sponge</div> <div><div></div> Spot Cleaner</div> Cleanability

Issued to: **Dazian**

Test Report #: **2-98558-0**

Completed: **09/05/2013**

Key Test: **CA 1237 SM**

California Fire Marshal 19 - Section 1237 Fire Resistance; Small Scale Test - Interior Materials Qualification



Style No: **FRC10811**

Style Name: **Melting Point**

Color: **White**

Width: **102"**

Composition: **100% Trevira CS**

Weight: **6.1 oz/yd²**

End Use: **Ceiling Fabric For Use in Areas with Sprinkler Systems**

*James Skandalaris*

James Skandalaris  
President

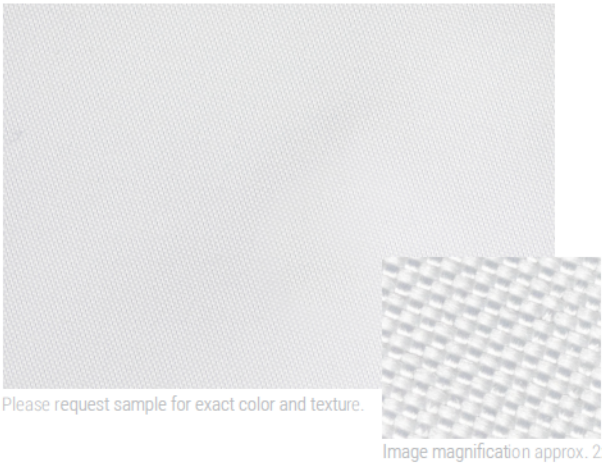
06/09/2017

Date

This fabric meets or exceeds the flammability standards set forth in the National Fire Protection Association specification #NFPA-701. Any alteration of the fabric voids any warranty either implied or expressed. The liability of the seller is limited to the selling price as stated on the invoice and related transportation cost.

# UltraTec Liner

110" Wide optic white 100% polyester woven fabric with one-sided blockout coating.



Tradeshows,  
Displays  
& Exhibits



Architectural  
/ Agency



Advertising



Creative  
/ Design  
Firms



Experiential  
Marketing



Events



Corporate  
Office



Sports /  
Entertainment



Healthcare



Retail



Financial



Museums

## Uses

2D Pillowcase	✓
Fully Enclosed 3D	✓
SEG	✓
Pole Pocket	✓
Ceilings	
Outdoor	
Opacity	Opaque

## Features & Specs

<div>9ft</div> <div>Usable Width</div>	<div>NFPA 701</div> <div>Fire Retardant</div>	<div></div> <div>Foldable for Shipping</div>	<div></div> <div>Stretch</div>
<div><div><div></div><div></div><div></div></div><div>Dye Sub Latex UV</div><div>Printing</div></div>	<div>6.7</div> <div>Oz/yd<sup>2</sup></div> <div>Fabric Weight</div>	<div>100%</div> <div>Polyester with Viscose/Rayon Flocking</div> <div>Fabric Composition</div>	<div><div><div>✓</div><div>✓</div><div>✓</div></div><div>Machine Wash Dry Sponge Spot Cleaner</div><div>Cleanability</div></div>

Issued to: **Tectonics**  
Test Report #: **26325**  
Completed: **07/28/17**

Key Test: **CA 1237 Sm**

California Fire Marshal 19 - Section 1237 Fire Resistance; Small Scale Test -  
Interior Materials Qualification



Style No: **FRC10817**

Style Name: **UltraTec Liner**

Color: **White**

Width: **110"**

Composition: **100% Polyester w/ Viscose Rayon Coating**

Weight: **7.5oz/yd²**

End Use: **Exhibit Graphics, Retail Displays, Event Decor**

*James Skandalaris*

James Skandalaris  
**President**

07/18/2017

**Date**

This fabric meets or exceeds the flammability standards set forth in the National Fire Protection Association specification #NFPA-701. Any alteration of the fabric voids any warranty either implied or expressed. The liability of the seller is limited to the selling price as stated on the invoice and related transportation cost.



Please request sample for exact color and texture.

# UltraTec SF Liner

125" Wide 100% polyester woven fabric with 100% opacity.



Tradeshows,  
Displays  
& Exhibits



Architectural  
/ Agency



Advertising



Creative  
/ Design  
Firms



Experiential  
Marketing



Events



Corporate  
Office



Sports /  
Entertainment



Healthcare



Retail



Financial



Museums

## Uses

2D Pillowcase	
Fully Enclosed 3D	
SEG	✓
Pole Pocket	✓
Ceilings	✓
Outdoor	✓
Opacity	Opaque

## Features & Specs

10ft

Usable  
Width

NFPA  
701

Fire  
Retardant



Foldable for  
Shipping



Stretch

- Dye Sub
- Latex
- UV

Printing

2.65  
Oz/yd<sup>2</sup>

Fabric Weight

100%  
Polyester

Fabric Composition

- Machine Wash
- ✓ Dry Sponge
- ✓ Spot Cleaner

Cleanability



# ColorTec Arctic

66" Wide light grey 100% inherently flame retardant polyester. PMS 434C.



Tradeshow,  
Displays  
& Exhibits



Architectural  
/ Agency



Advertising



Creative  
/ Design  
Firms



Experiential  
Marketing



Events



Corporate  
Office



Sports /  
Entertainment



Healthcare



Retail



Financial



Museums

## Uses

2D Pillowcase	✓
Fully Enclosed 3D	✓
SEG	✓
Pole Pocket	✓
Ceilings	
Outdoor	
Opacity	Limited

## Features & Specs

5.33ft	NFPA 701		
Usable Width	Fire Retardant	Foldable for Shipping	Stretch
<div><div></div> Dye Sub</div> <div><div></div> Latex</div> <div><div></div> UV</div>	6 Oz/yd <sup>2</sup>	100% Polyester	<div><div>✓</div> Machine Wash</div> <div><div>✓</div> Dry Sponge</div> <div><div>✓</div> Spot Cleaner</div>
Printing	Fabric Weight	Fabric Composition	Cleanability

Issued to: **Phillipp Textiles**

Test Report #: **19547**

Completed: **4/20/2016**

Key Test: **NFPA 701-2015 TM#1**

NFPA 701 - Standard Methods of Fire Tests for Flame Propagation of Textiles and Films - 2015 Edition - Test Method #1



Style No: **FRC13005**

Style Name: **ColorTec**

Color: **Arctic**

Width: **66"**

Composition: **100% Inherently Flame Retardant Polyester**

Weight: **6.0oz/yd<sup>2</sup>**

End Use: **Exhibit Graphics, Retail Displays, Event Décor**

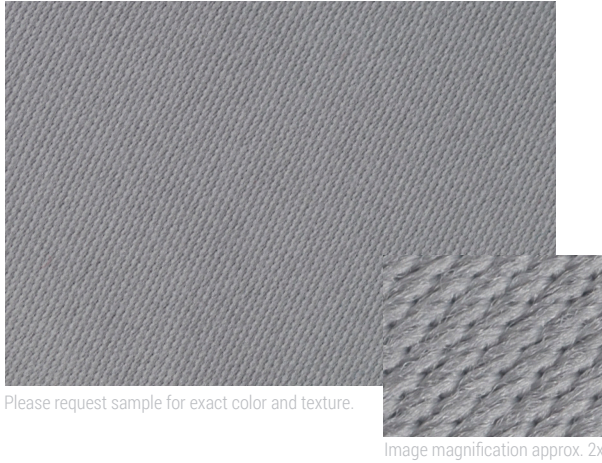
*James Skandalaris*

James Skandalaris  
President

06/12/2017

Date

This fabric meets or exceeds the flammability standards set forth in the National Fire Protection Association specification #NFPA-701. Any alteration of the fabric voids any warranty either implied or expressed. The liability of the seller is limited to the selling price as stated on the invoice and related transportation cost.



## ColorTec Grey

66" Wide medium grey 100% inherently flame retardant polyester. PMS 423C.



Tradeshows,  
Displays  
& Exhibits



Architectural  
/ Agency



Advertising



Creative  
/ Design  
Firms



Experiential  
Marketing



Events



Corporate  
Office



Sports /  
Entertainment



Healthcare



Retail



Financial



Museums

## Uses

2D Pillowcase	✓
Fully Enclosed 3D	✓
SEG	✓
Pole Pocket	✓
Ceilings	
Outdoor	
Opacity	Moderate

## Features & Specs

5.33ft

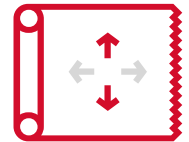
Usable  
Width

NFPA  
701

Fire  
Retardant



Foldable for  
Shipping



Stretch

- Dye Sub
- Latex
- UV

Printing

6

Oz/yd<sup>2</sup>

Fabric Weight

100%

Polyester

Fabric Composition

- ✓ Machine Wash
- ✓ Dry Sponge
- ✓ Spot Cleaner

Cleanability

Issued to: **Phillipp Textiles**

Test Report #: **19547**

Completed: **4/20/2016**

Key Test: **NFPA 701-2015 TM#1**

NFPA 701 - Standard Methods of Fire Tests for Flame Propagation of Textiles and Films - 2015 Edition - Test Method #1



Style No: **FRC12012**

Style Name: **ColorTec**

Color: **Grey**

Width: **66"**

Composition: **100% Inherently Flame Retardant Polyester**

Weight: **6.0 oz/yd<sup>2</sup>**

End Use: **Exhibit Graphics, Retail Displays, Event Décor**

*James Skandalaris*

James Skandalaris  
President

06/12/2017

Date

This fabric meets or exceeds the flammability standards set forth in the National Fire Protection Association specification #NFPA-701. Any alteration of the fabric voids any warranty either implied or expressed. The liability of the seller is limited to the selling price as stated on the invoice and related transportation cost.



# ColorTec Charcoal

66" Wide dark grey 100% inherently flame retardant polyester. PMS 7540C.



Tradeshow,  
Displays  
& Exhibits



Architectural  
/ Agency



Advertising



Creative  
/ Design  
Firms



Experiential  
Marketing



Events



Corporate  
Office



Sports /  
Entertainment



Healthcare



Retail



Financial



Museums

## Uses

2D Pillowcase	✓
Fully Enclosed 3D	✓
SEG	✓
Pole Pocket	✓
Ceilings	
Outdoor	
Opacity	Moderate

## Features & Specs

5.33ft	NFPA 701		
Usable Width	Fire Retardant	Foldable for Shipping	Stretch
<div><div></div> Dye Sub</div> <div><div></div> Latex</div> <div><div></div> UV</div>	6	100%	<div><div>✓</div> Machine Wash</div> <div><div>✓</div> Dry Sponge</div> <div><div>✓</div> Spot Cleaner</div>
Printing	Fabric Weight	Fabric Composition	Cleanability

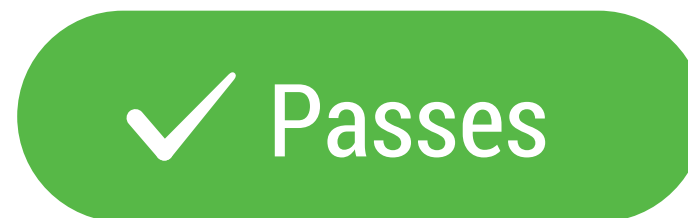
Issued to: **Phillipp Textiles**

Test Report #: **19547**

Completed: **4/20/2016**

Key Test: **NFPA 701-2015 TM#1**

NFPA 701 - Standard Methods of Fire Tests for Flame Propagation of Textiles and Films - 2015 Edition - Test Method #1



Style No: **FRC13007**

Style Name: **ColorTec**

Color: **Charcoal**

Width: **66"**

Composition: **100% Inherently Flame Retardant Polyester**

Weight: **6.0 oz/yd<sup>2</sup>**

End Use: **Exhibit Graphics, Retail Displays, Event Décor**

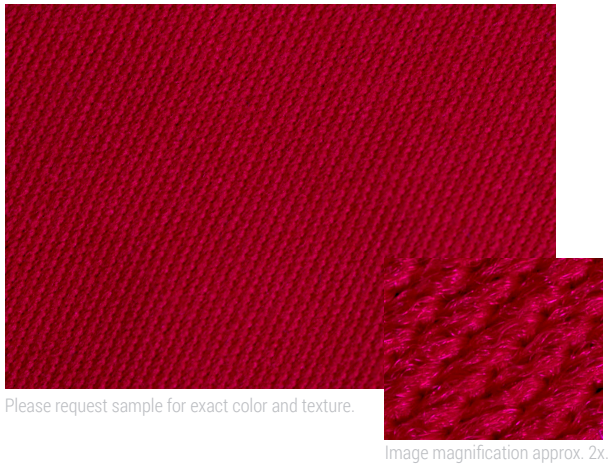
*James Skandalaris*

James Skandalaris  
President

06/12/2017

Date

This fabric meets or exceeds the flammability standards set forth in the National Fire Protection Association specification #NFPA-701. Any alteration of the fabric voids any warranty either implied or expressed. The liability of the seller is limited to the selling price as stated on the invoice and related transportation cost.



# ColorTec Red

66" Wide bright red 100% inherently flame retardant polyester. PMS 187C.



Tradeshows,  
Displays  
& Exhibits



Architectural  
/ Agency



Advertising



Creative  
/ Design  
Firms



Experiential  
Marketing



Events



Corporate  
Office



Sports /  
Entertainment



Healthcare



Retail



Financial



Museums

## Uses

2D Pillowcase	✓
Fully Enclosed 3D	✓
SEG	✓
Pole Pocket	✓
Ceilings	
Outdoor	
Opacity	Moderate

## Features & Specs

5.33ft	NFPA 701		
Usable Width	Fire Retardant	Foldable for Shipping	Stretch
<div><div></div> Dye Sub</div> <div><div></div> Latex</div> <div><div></div> UV</div>	6 Oz/yd <sup>2</sup>	100% Polyester	<div><div>✓</div> Machine Wash</div> <div><div>✓</div> Dry Sponge</div> <div><div>✓</div> Spot Cleaner</div>
Printing	Fabric Weight	Fabric Composition	Cleanability

Issued to: **Phillipp Textiles**

Test Report #: **19547**

Completed: **4/20/2016**

Key Test: **NFPA 701-2015 TM#1**

NFPA 701 - Standard Methods of Fire Tests for Flame Propagation of Textiles and Films - 2015 Edition - Test Method #1



Style No: **FRC13018**

Style Name: **ColorTec**

Color: **Red**

Width: **66"**

Composition: **100% Inherently Flame Retardant Polyester**

Weight: **6.0 oz/yd<sup>2</sup>**

End Use: **Exhibit Graphics, Retail Displays, Event Décor**

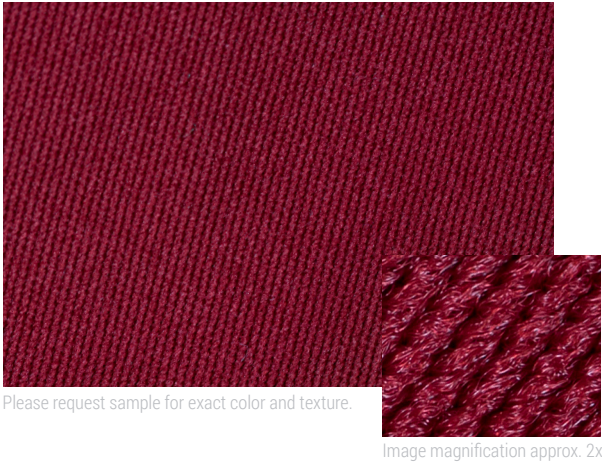
*James Skandalaris*

James Skandalaris  
President

06/12/2017

Date

This fabric meets or exceeds the flammability standards set forth in the National Fire Protection Association specification #NFPA-701. Any alteration of the fabric voids any warranty either implied or expressed. The liability of the seller is limited to the selling price as stated on the invoice and related transportation cost.



# ColorTec Bordeaux

66" Wide dark red 100% inherently flame retardant polyester. PMS 202C.



Tradeshow,  
Displays  
& Exhibits



Architectural  
/ Agency



Advertising



Creative  
/ Design  
Firms



Experiential  
Marketing



Events



Corporate  
Office



Sports /  
Entertainment



Healthcare



Retail



Financial



Museums

## Uses

2D Pillowcase	✓
Fully Enclosed 3D	✓
SEG	✓
Pole Pocket	✓
Ceilings	
Outdoor	
Opacity	Moderate

## Features & Specs

5.33ft	NFPA 701		
Usable Width	Fire Retardant	Foldable for Shipping	Stretch
<div><div></div> Dye Sub</div> <div><div></div> Latex</div> <div><div></div> UV</div>	6 Oz/yd <sup>2</sup>	100% Polyester	<div><div>✓</div> Machine Wash</div> <div><div>✓</div> Dry Sponge</div> <div><div>✓</div> Spot Cleaner</div>
Printing	Fabric Weight	Fabric Composition	Cleanability

Issued to: **Phillipp Textiles**

Test Report #: **19547**

Completed: **4/20/2016**

Key Test: **NFPA 701-2015 TM#1**

NFPA 701 - Standard Methods of Fire Tests for Flame Propagation of Textiles and Films - 2015 Edition - Test Method #1



Style No: **FRC12014**

Style Name: **ColorTec**

Color: **Bordeaux**

Width: **66"**

Composition: **100% Inherently Flame Retardant Polyester**

Weight: **6.0 oz/yd<sup>2</sup>**

End Use: **Exhibit Graphics, Retail Displays, Event Décor**

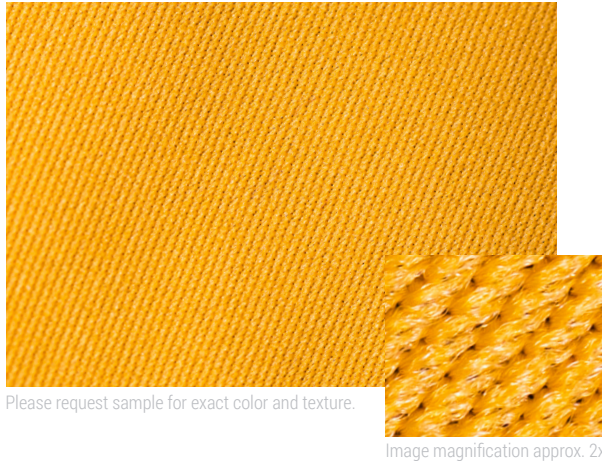
*James Skandalaris*

James Skandalaris  
President

06/12/2017

Date

This fabric meets or exceeds the flammability standards set forth in the National Fire Protection Association specification #NFPA-701. Any alteration of the fabric voids any warranty either implied or expressed. The liability of the seller is limited to the selling price as stated on the invoice and related transportation cost.



## ColorTec Cognac

66" Wide golden yellow 100% inherently flame retardant polyester. PMS 143C.



Tradeshows,  
Displays  
& Exhibits



Architectural  
/ Agency



Advertising



Creative  
/ Design  
Firms



Experiential  
Marketing



Events



Corporate  
Office



Sports /  
Entertainment



Healthcare



Retail



Financial



Museums

## Uses

2D Pillowcase	✓
Fully Enclosed 3D	✓
SEG	✓
Pole Pocket	✓
Ceilings	
Outdoor	
Opacity	Moderate

## Features & Specs

5.33ft

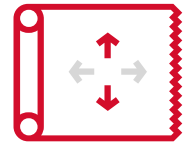
Usable  
Width

NFPA  
701

Fire  
Retardant



Foldable for  
Shipping



Stretch

- Dye Sub
- Latex
- UV

Printing

6

Oz/yd<sup>2</sup>

Fabric Weight

100%

Polyester

Fabric Composition

- ✓ Machine Wash
- ✓ Dry Sponge
- ✓ Spot Cleaner

Cleanability

Issued to: **Phillipp Textiles**

Test Report #: **19547**

Completed: **4/20/2016**

Key Test: **NFPA 701-2015 TM#1**

NFPA 701 - Standard Methods of Fire Tests for Flame Propagation of Textiles and Films - 2015 Edition - Test Method #1



Style No: **FRC12009**

Style Name: **ColorTec**

Color: **Cognac**

Width: **66"**

Composition: **100% Inherently Flame Retardant Polyester**

Weight: **6.0 oz/yd<sup>2</sup>**

End Use: **Exhibit Graphics, Retail Displays, Event Décor**

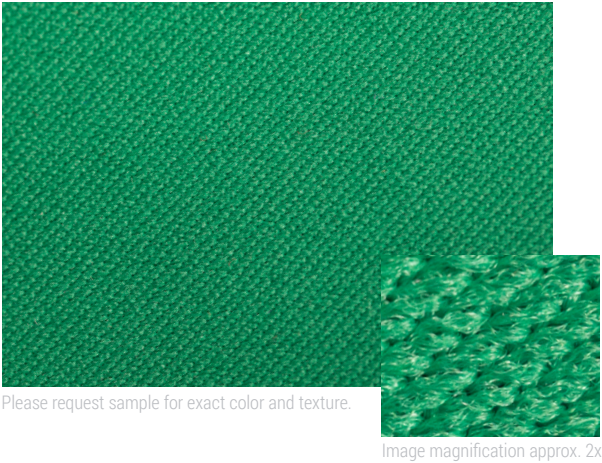
*James Skandalaris*

James Skandalaris  
President

06/12/2017

Date

This fabric meets or exceeds the flammability standards set forth in the National Fire Protection Association specification #NFPA-701. Any alteration of the fabric voids any warranty either implied or expressed. The liability of the seller is limited to the selling price as stated on the invoice and related transportation cost.



# ColorTec Green

66" Wide medium green 100% inherently flame retardant polyester. PMS 7725C.



Tradeshows,  
Displays  
& Exhibits



Architectural  
/ Agency



Advertising



Creative  
/ Design  
Firms



Experiential  
Marketing



Events



Corporate  
Office



Sports /  
Entertainment



Healthcare



Retail



Financial



Museums

## Uses

2D Pillowcase	✓
Fully Enclosed 3D	✓
SEG	✓
Pole Pocket	✓
Ceilings	
Outdoor	
Opacity	Moderate

## Features & Specs

5.33ft	NFPA 701		
Usable Width	Fire Retardant	Foldable for Shipping	Stretch
<div><div></div> Dye Sub</div> <div><div></div> Latex</div> <div><div></div> UV</div>	6 Oz/yd <sup>2</sup>	100% Polyester	<div><div>✓</div> Machine Wash</div> <div><div>✓</div> Dry Sponge</div> <div><div>✓</div> Spot Cleaner</div>
Printing	Fabric Weight	Fabric Composition	Cleanability

Issued to: **Phillipp Textiles**

Test Report #: **19547**

Completed: **4/20/2016**

Key Test: **NFPA 701-2015 TM#1**

NFPA 701 - Standard Methods of Fire Tests for Flame Propagation of Textiles and Films - 2015 Edition - Test Method #1



Style No: **FRC12022**

Style Name: **ColorTec**

Color: **Green**

Width: **66"**

Composition: **100% Inherently Flame Retardant Polyester**

Weight: **6.0 oz/yd<sup>2</sup>**

End Use: **Exhibit Graphics, Retail Displays, Event Décor**

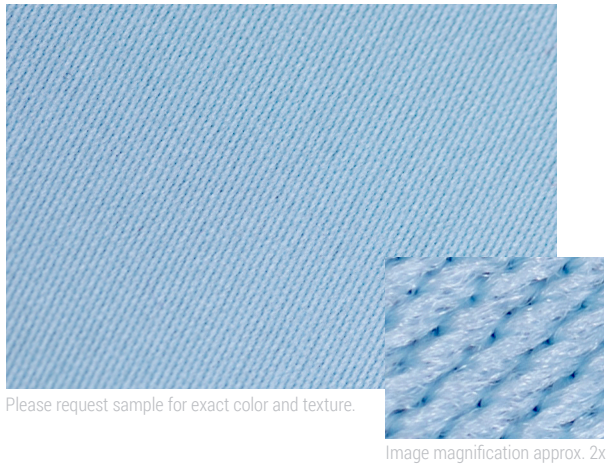
*James Skandalaris*

James Skandalaris  
President

06/12/2017

Date

This fabric meets or exceeds the flammability standards set forth in the National Fire Protection Association specification #NFPA-701. Any alteration of the fabric voids any warranty either implied or expressed. The liability of the seller is limited to the selling price as stated on the invoice and related transportation cost.



# ColorTec Alpine

66" Wide light blue 100% inherently flame retardant polyester. PMS 291C.



Tradeshow,  
Displays  
& Exhibits



Architectural  
/ Agency



Advertising



Creative  
/ Design  
Firms



Experiential  
Marketing



Events



Corporate  
Office



Sports /  
Entertainment



Healthcare



Retail



Financial



Museums

## Uses

2D Pillowcase	✓
Fully Enclosed 3D	✓
SEG	✓
Pole Pocket	✓
Ceilings	
Outdoor	
Opacity	Limited

## Features & Specs

5.33ft	NFPA 701		
Usable Width	Fire Retardant	Foldable for Shipping	Stretch
<div><div></div> Dye Sub</div> <div><div></div> Latex</div> <div><div></div> UV</div>	6 Oz/yd <sup>2</sup>	100% Polyester	<div><div>✓</div> Machine Wash</div> <div><div>✓</div> Dry Sponge</div> <div><div>✓</div> Spot Cleaner</div>
Printing	Fabric Weight	Fabric Composition	Cleanability

Issued to: **Phillipp Textiles**

Test Report #: **19547**

Completed: **4/20/2016**

Key Test: **NFPA 701-2015 TM#1**

NFPA 701 - Standard Methods of Fire Tests for Flame Propagation of Textiles and Films - 2015 Edition - Test Method #1



Style No: **FRC12011**

Style Name: **ColorTec**

Color: **Alpine**

Width: **66"**

Composition: **100% Inherently Flame Retardant Polyester**

Weight: **6.0 oz/yd<sup>2</sup>**

End Use: **Exhibit Graphics, Retail Displays, Event Décor**

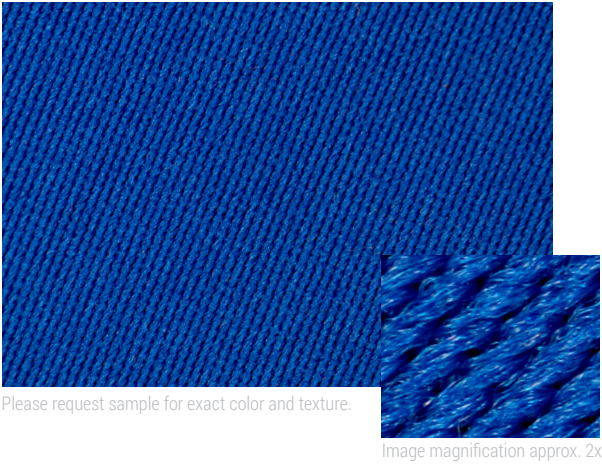
*James Skandalaris*

James Skandalaris  
President

06/12/2017

Date

This fabric meets or exceeds the flammability standards set forth in the National Fire Protection Association specification #NFPA-701. Any alteration of the fabric voids any warranty either implied or expressed. The liability of the seller is limited to the selling price as stated on the invoice and related transportation cost.



# ColorTec Blue

66" Wide bright blue 100% inherently flame retardant polyester. PMS 286C.



Tradeshow,  
Displays  
& Exhibits



Architectural  
/ Agency



Advertising



Creative  
/ Design  
Firms



Experiential  
Marketing



Events



Corporate  
Office



Sports /  
Entertainment



Healthcare



Retail



Financial



Museums

## Uses

2D Pillowcase	✓
Fully Enclosed 3D	✓
SEG	✓
Pole Pocket	✓
Ceilings	
Outdoor	
Opacity	Moderate

## Features & Specs

5.33ft	NFPA 701		
Usable Width	Fire Retardant	Foldable for Shipping	Stretch
<div><div></div> Dye Sub</div> <div><div></div> Latex</div> <div><div></div> UV</div>	6 Oz/yd <sup>2</sup>	100% Polyester	<div><div>✓</div> Machine Wash</div> <div><div>✓</div> Dry Sponge</div> <div><div>✓</div> Spot Cleaner</div>
Printing	Fabric Weight	Fabric Composition	Cleanability

Issued to: **Phillipp Textiles**

Test Report #: **19547**

Completed: **4/20/2016**

Key Test: **NFPA 701-2015 TM#1**

NFPA 701 - Standard Methods of Fire Tests for Flame Propagation of Textiles and Films - 2015 Edition - Test Method #1



Style No: **FRC12001**

Style Name: **ColorTec**

Color: **Blue**

Width: **66"**

Composition: **100% Inherently Flame Retardant Polyester**

Weight: **6.0 oz/yd<sup>2</sup>**

End Use: **Exhibit Graphics, Retail Displays, Event Décor**

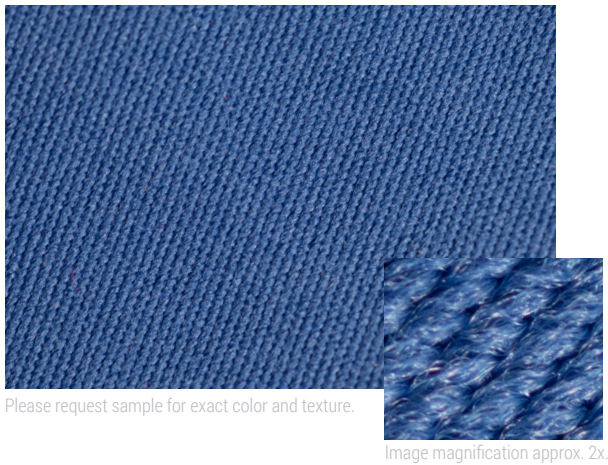
*James Skandalaris*

James Skandalaris  
President

06/12/2017

Date

This fabric meets or exceeds the flammability standards set forth in the National Fire Protection Association specification #NFPA-701. Any alteration of the fabric voids any warranty either implied or expressed. The liability of the seller is limited to the selling price as stated on the invoice and related transportation cost.



# ColorTec Royal

66" Wide royal blue 100% inherently flame retardant polyester. PMS 7685C.



Tradeshow,  
Displays  
& Exhibits



Architectural  
/ Agency



Advertising



Creative  
/ Design  
Firms



Experiential  
Marketing



Events



Corporate  
Office



Sports /  
Entertainment



Healthcare



Retail



Financial




Museums

## Uses

2D Pillowcase	✓
Fully Enclosed 3D	✓
SEG	✓
Pole Pocket	✓
Ceilings	
Outdoor	
Opacity	Moderate

## Features & Specs

5.33ft Usable Width	NFPA 701 Fire Retardant	 Foldable for Shipping	 Stretch
 Dye Sub  Latex  UV Printing	6 Oz/yd <sup>2</sup> Fabric Weight	100% Polyester Fabric Composition	✓ Machine Wash ✓ Dry Sponge ✓ Spot Cleaner Cleanability

Issued to: **Phillipp Textiles**

Test Report #: **19547**

Completed: **4/20/2016**

Key Test: **NFPA 701-2015 TM#1**

NFPA 701 - Standard Methods of Fire Tests for Flame Propagation of Textiles and Films - 2015 Edition - Test Method #1



Style No: **FRC13003**

Style Name: **ColorTec**

Color: **Royal**

Width: **66"**

Composition: **100% Inherently Flame Retardant Polyester**

Weight: **6.0 oz/yd<sup>2</sup>**

End Use: **Exhibit Graphics, Retail Displays, Event Décor**

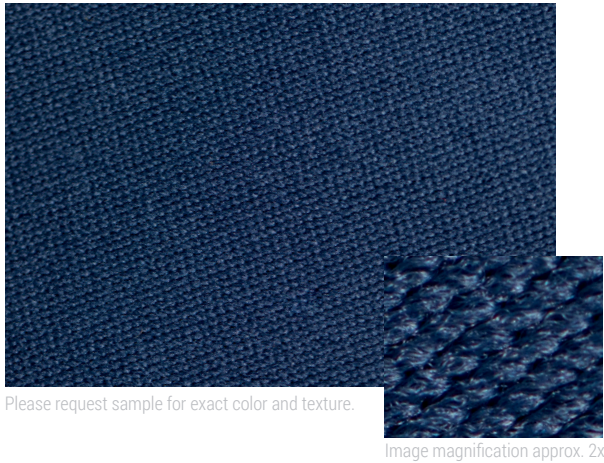
*James Skandalaris*

James Skandalaris  
President

06/12/2017

Date

This fabric meets or exceeds the flammability standards set forth in the National Fire Protection Association specification #NFPA-701. Any alteration of the fabric voids any warranty either implied or expressed. The liability of the seller is limited to the selling price as stated on the invoice and related transportation cost.



# ColorTec Navy

66" Wide navy blue 100% inherently flame retardant polyester. PMS 534C.



Tradeshow,  
Displays  
& Exhibits



Architectural  
/ Agency



Advertising



Creative  
/ Design  
Firms



Experiential  
Marketing



Events



Corporate  
Office



Sports /  
Entertainment



Healthcare



Retail



Financial



Museums

## Uses

2D Pillowcase	✓
Fully Enclosed 3D	✓
SEG	✓
Pole Pocket	✓
Ceilings	
Outdoor	
Opacity	Moderate

## Features & Specs

5.33ft	NFPA 701		
Usable Width	Fire Retardant	Foldable for Shipping	Stretch
<div><div></div> Dye Sub</div> <div><div></div> Latex</div> <div><div></div> UV</div>	6 Oz/yd <sup>2</sup>	100% Polyester	<div><div>✓</div> Machine Wash</div> <div><div>✓</div> Dry Sponge</div> <div><div>✓</div> Spot Cleaner</div>
Printing	Fabric Weight	Fabric Composition	Cleanability

Issued to: **Phillipp Textiles**

Test Report #: **19547**

Completed: **4/20/2016**

Key Test: **NFPA 701-2015 TM#1**

NFPA 701 - Standard Methods of Fire Tests for Flame Propagation of Textiles and Films - 2015 Edition - Test Method #1



Style No: **FRC13006**

Style Name: **ColorTec**

Color: **Navy**

Width: **66"**

Composition: **100% Inherently Flame Retardant Polyester**

Weight: **6.0 oz/yd<sup>2</sup>**

End Use: **Exhibit Graphics, Retail Displays, Event Décor**

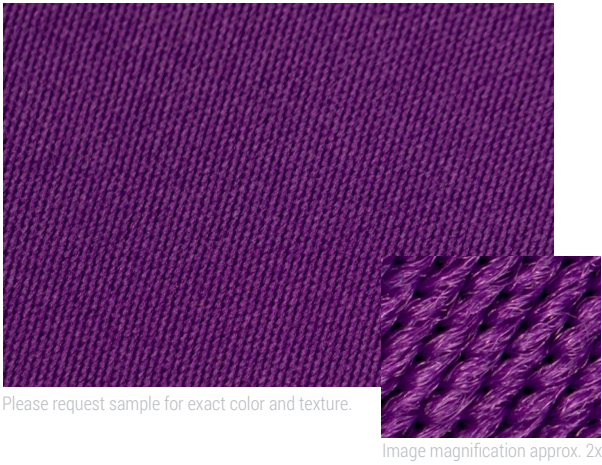
*James Skandalaris*

James Skandalaris  
President

06/12/2017

Date

This fabric meets or exceeds the flammability standards set forth in the National Fire Protection Association specification #NFPA-701. Any alteration of the fabric voids any warranty either implied or expressed. The liability of the seller is limited to the selling price as stated on the invoice and related transportation cost.



# ColorTec Purple

66" Wide medium purple 100% inherently flame retardant polyester. PMS 2597C.



Tradeshows,  
Displays  
& Exhibits



Architectural  
/ Agency



Advertising



Creative  
/ Design  
Firms



Experiential  
Marketing



Events



Corporate  
Office



Sports /  
Entertainment



Healthcare



Retail



Financial



Museums

## Uses

2D Pillowcase	✓
Fully Enclosed 3D	✓
SEG	✓
Pole Pocket	✓
Ceilings	
Outdoor	
Opacity	Moderate

## Features & Specs

5.33ft	NFPA 701		
Usable Width	Fire Retardant	Foldable for Shipping	Stretch
<div><div></div> Dye Sub</div> <div><div></div> Latex</div> <div><div></div> UV</div>	6 Oz/yd <sup>2</sup>	100% Polyester	<div><div>✓</div> Machine Wash</div> <div><div>✓</div> Dry Sponge</div> <div><div>✓</div> Spot Cleaner</div>
Printing	Fabric Weight	Fabric Composition	Cleanability

Issued to: **Phillipp Textiles**

Test Report #: **19547**

Completed: **4/20/2016**

Key Test: **NFPA 701-2015 TM#1**

NFPA 701 - Standard Methods of Fire Tests for Flame Propagation of Textiles and Films - 2015 Edition - Test Method #1



Style No: **FRC13016**

Style Name: **ColorTec**

Color: **Purple**

Width: **66"**

Composition: **100% Inherently Flame Retardant Polyester**

Weight: **6.0 oz/yd<sup>2</sup>**

End Use: **Exhibit Graphics, Retail Displays, Event Décor**

*James Skandalaris*

James Skandalaris  
President

06/12/2017

Date

This fabric meets or exceeds the flammability standards set forth in the National Fire Protection Association specification #NFPA-701. Any alteration of the fabric voids any warranty either implied or expressed. The liability of the seller is limited to the selling price as stated on the invoice and related transportation cost.

## Avoiding Stains

- Wash your hands before handling any fabric
- Protect your fabric from the floor, use a drop cloth

## Removing Stains

- Fresh stains are easier to remove, act quickly
- Use distilled water when attempting to remove a stain
- If cleaners have been used, make sure that all are rinsed clear of the fabric and moisture is blotted away

## Fabric Storage

- Fabrics should be clean and dry prior to packaging
- Fabric graphics should be folded with image side in to protect the graphic from any dust or dirt
- Original fabric containers and bags should be saved, it is best to store fabrics in the containers that they were shipped in

**01** Use a lint roller to remove any dust or dirt

**02** Use provided dry sponge

- Do this dry!!! Do not use with any water or cleaning products
- Brush the stain back and forth, then reverse direction

**03** Use provided cleaner and wash cloth to spot clean approved fabrics as noted below.

✓	✗
SoftTec SoftTec Max SoftTec Opaque StretchTec Vinyl Banner Vinyl Mesh	SoftTec Heavy MeshTec MeshTec Open FlagTec FlagTec Max LumiTec UV LumiTec LumiTec Max Celtic

**04** If your fabric is on the no spray cleaner list, call Tectonics

**05** If stains persist, call Tectonics, we would love to help